

Zip Code 78704

Residential Statistics



September 2021

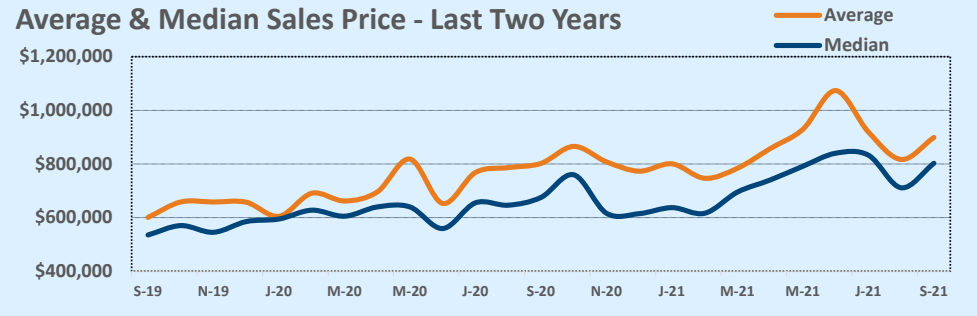
Listings	This Month			Year-to-Date		
	Sep 2021	Sep 2020	Change	2021	2020	Change
Single Family Sales	44	53	-17.0%	403	360	+11.9%
Condo/TH Sales	36	40	-10.0%	398	290	+37.2%
Total Sales	80	93	-14.0%	801	650	+23.2%
New Homes Only	4	16	-75.0%	76	90	-15.6%
Resale Only	76	77	-1.3%	725	560	+29.5%
Sales Volume	\$71,901,080	\$74,572,713	-3.6%	\$696,677,520	\$472,464,993	+47.5%
New Listings	--	--	--	--	--	--
Pending	39	91	-57.1%	73	695	-89.5%
Withdrawn	10	19	-47.4%	74	112	-33.9%
Expired	5	12	-58.3%	31	111	-72.1%
Months of Inventory	0.9	2.3	-59.0%	N/A	N/A	--

Price Range	This Month			Year-to-Date		
	New	Sales	DOM	New	Sales	DOM
\$149,999 or under	--	--	--	--	--	--
\$150,000- \$199,999	--	1	45	8	5	42
\$200,000- \$249,999	2	--	--	19	24	42
\$250,000- \$299,999	4	4	8	46	36	18
\$300,000- \$349,999	4	8	14	43	37	20
\$350,000- \$399,999	3	2	2	39	37	29
\$400,000- \$449,999	1	7	13	30	43	33
\$450,000- \$499,999	--	2	8	30	32	26
\$500,000- \$549,999	3	1	5	25	29	26
\$550,000- \$599,999	2	--	--	35	32	22
\$600,000- \$699,999	9	2	7	78	81	34
\$700,000- \$799,999	8	12	11	101	79	22
\$800,000- \$899,999	9	12	21	63	79	28
\$900,000- \$999,999	6	1	6	69	38	47
\$1M - \$1.99M	32	26	29	215	212	29
\$2M - \$2.99M	2	2	3	39	32	21
\$3M+	--	--	--	10	5	54
Totals	85	80	18	850	801	29

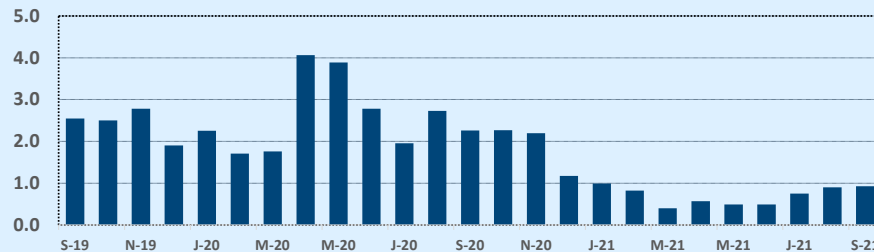
Average	This Month			Year-to-Date		
	Sep 2021	Sep 2020	Change	2021	2020	Change
List Price	\$886,264	\$813,502	+8.9%	\$834,656	\$741,059	+12.6%
List Price/SqFt	\$585	\$451	+29.6%	\$525	\$442	+18.9%
Sold Price	\$898,764	\$801,857	+12.1%	\$869,760	\$726,869	+19.7%
Sold Price/SqFt	\$595	\$445	+33.9%	\$548	\$435	+26.1%
Sold Price / Orig LP	101.9%	97.0%	+5.0%	104.0%	97.1%	+7.1%
Days on Market	18	47	-60.6%	29	41	-29.4%

Median	This Month			Year-to-Date		
	Sep 2021	Sep 2020	Change	2021	2020	Change
List Price	\$762,500	\$675,000	+13.0%	\$725,000	\$639,945	+13.3%
List Price/SqFt	\$553	\$442	+25.2%	\$496	\$426	+16.5%
Sold Price	\$802,500	\$675,000	+18.9%	\$750,000	\$625,000	+20.0%
Sold Price/SqFt	\$539	\$442	+22.0%	\$510	\$421	+21.3%
Sold Price / Orig LP	100.0%	98.0%	+2.0%	101.0%	98.0%	+3.1%
Days on Market	7	18	-61.1%	6	18	-66.7%

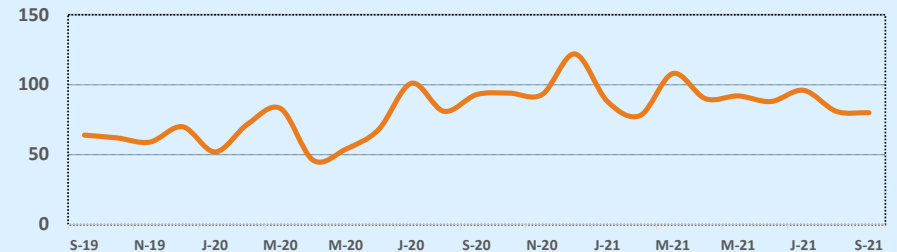
Average & Median Sales Price - Last Two Years



Months of Inventory - Last Two Years



Number of Sales - Last Two Years



Based on information from the Austin Board of REALTORS® (alternatively, from ACTRIS). Neither the Board nor ACTRIS guarantees or is in any way responsible for its accuracy. The Austin Board of REALTORS®, ACTRIS and their affiliates provide the MLS and all content therein "AS IS" and without any warranty, express or implied. Data maintained by the Board or ACTRIS may not reflect all real estate activity in the market.